



Infrastructure Products Catalogue Rail/Mining

Rail/Mining]

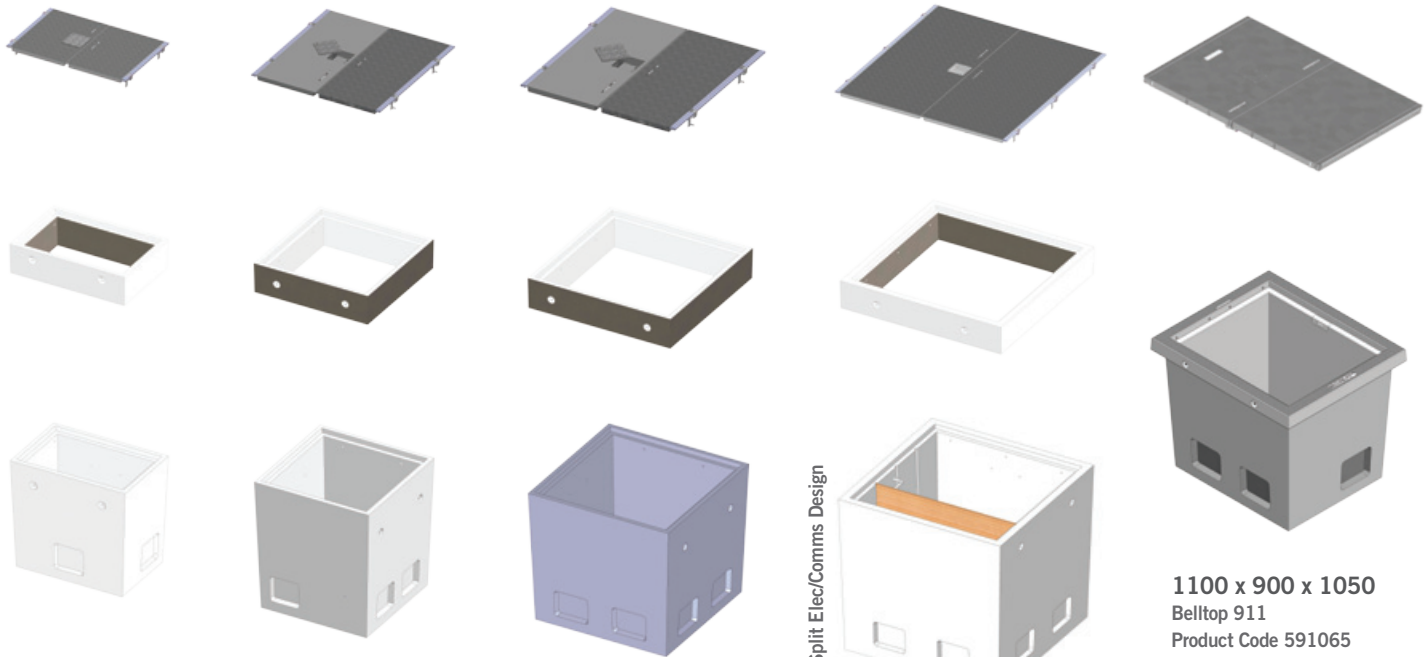
BVCI have developed a range of pre-cast concrete and plastic cable pit and access cover product to meet the specific requirements of the Rail industry in Australia. The constant vibration as caused by light and heavy rail traffic create a unique problem for cable pits installed near rail lines.

BVCI designs have taken into consideration this unique effect and produced square and rectangular pre-cast concrete cable pits with steel bar and mesh reinforcement, as well as heavy duty circular rotational moulded plastic polymer cable pits as used in the Vic Rail network systems. Standard plastic cable pits as used in Telecommunications and Electrical industries are also available for specific installations on these projects.

The BVCI cable pit range is available with hinged locking galvanised steel access covers as specified for QR and RailCorp installations, or standard galvanised steel locking covers. BVCI are constantly working with Rail Authorities and Engineers to ensure product supplied meets the specific requirements and importantly the durability for light or heavy duty installations, such as rail lines from Mining locations to Port.

BVCI pre-cast concrete and plastic cable pits for this Mining industry sector are developed with similar heavy duty requirements as Rail. All pre-cast concrete pits are developed for heavy load rating and incorporate 40Mpa concrete with steel bar and mesh reinforcement. Cable pit access covers may be as developed for Defence and Rail, or for very heavy load applications the use of cast iron access covers encased in separate pre-cast concrete cable pit roofs. In these applications the load rating for the access covers is typically Class E, or possibly to Class G.

For Gas exploration projects the use of pre-cast concrete cable pits or plastic cable pits may be used. In these projects the load rating requirement is not as it is for general Mining (such as Coal Mines). Cable pits as used in Rail are ideal for these projects combined with hinged locking access covers. Alternatively plastic cable pits as used in Telecommunications and general Electrical industries with Class B load rated cast iron or galvanised mild steel locking covers are recommended. The locking of these sometimes remote location installations is recommended - simple Allen Key style, or for higher security level installations the use of SCEC access covers.



1000 x 600 x 1000
Product Code 524112

1000 x 1000 x 1195
Product Code 524113

Split Elec/Comms Design

1100 x 900 x 1050
Belltop 911
Product Code 591065

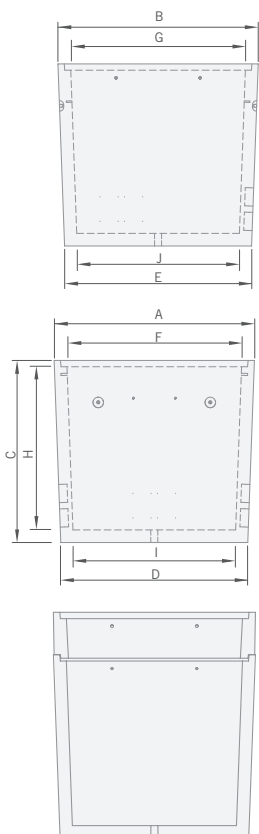
1500 x 1500 x 1500
Product Code 524114

Split Elec/Comms Design



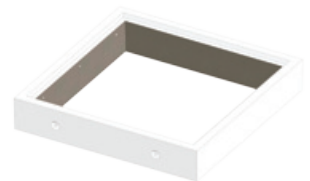
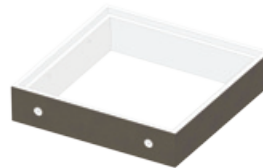
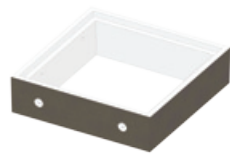
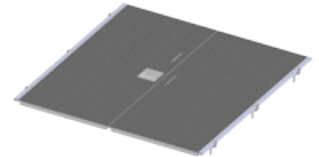
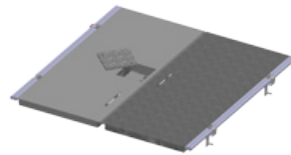
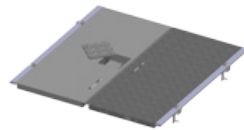
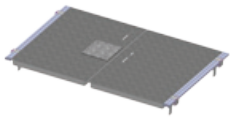
1200 x 1200 x 1195
Product Code 524118

Please note: All pits designed and constructed using steel bar and mesh reinforcement with 40Mpa concrete to ensure integrity and strength of construction as required in rail and mining installations. Hinged or non hinged GMS access covers available in Class B, C or D load rating. All precast concrete pits are structurally certified.



MANHOLE AND RISER ASSEMBLY CUT VIEW

Product Code (Pit only)	524112	524113	524118	524114	591065
Dimensions	1000 x 600 x 1000	1000 x 1000 x 1195	1200 x 1200 x 1195	1500 x 1500 x 1500	911 Bell Top
A	1180	1180	1430	1750	1410
B	780	1180	1430	1750	1210
C	1090	1300	1300	1625	1135
D	1090	1090	1335	1660	1157
E	720	1090	1335	1660	957
F	996	997	1247	1497	1100
G	597	997	1247	1497	900
H	955	1160	1160	1455	995
I	917	916	1162	1417	995
J	545	916	1162	1417	795

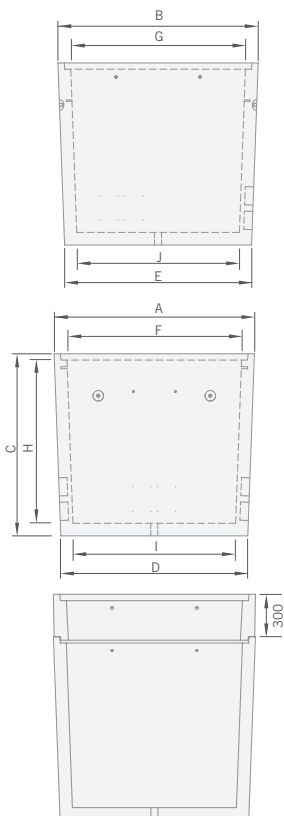


1000 x 600 x 1000
Product Code 524112

1000 x 1000 x 1195
Product Code 524113

1200 x 1200 x 1195
Product Code 524118

1500 x 1500 x 1500
Product Code 524114



MANHOLE AND RISER ASSEMBLY CUT VIEW

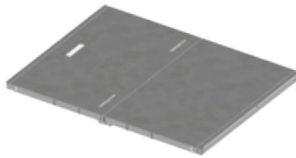
Product Code (Pit only)	524112	524113	524118	524114
Dimensions	1000 x 600 x 1000	1000 x 1000 x 1195	1200 x 1200 x 1195	1500 x 1500 x 1500
A	1180	1180	1430	1750
B	780	1180	1430	1750
C	1090	1300	1300	1625
D	1090	1090	1335	1660
E	720	1090	1335	1660
F	996	997	1247	1497
G	597	997	1247	1497
H	955	1160	1165	1455
I	917	916	1162	1417
J	545	916	1162	1417

Please note: All pits designed and constructed using steel bar and mesh reinforcement with 40Mpa concrete to ensure integrity and strength of construction as required in rail and mining installations.
Hinged GMS access covers available in Class A, B, C or D load rating.

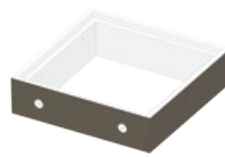
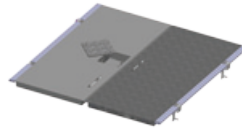
Vic Rail

Rail/Mining

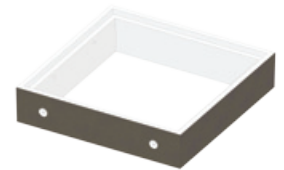
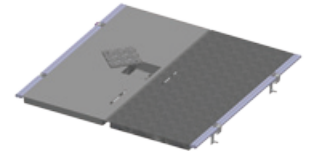
Rail Pits



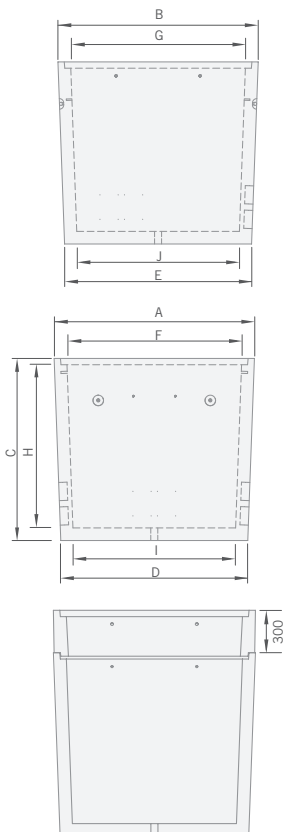
1100 x 900 x 1050
Belltop 911
Product Code 591065



1000 x 1000 x 1195
Product Code 524113



1200 x 1200 x 1195
Product Code 524118



MANHOLE AND RISER ASSEMBLY CUT VIEW

Product Code (Pit only)	591065	524113	524118
Dimensions	911 Bell Top	1000 x 1000 x 1195	1200 x 1200 x 1195
A	1410	1180	1430
B	1210	1180	1430
C	1135	1300	1300
D	1157	1090	1335
E	957	1090	1335
F	1100	997	1247
G	900	997	1247
H	995	1160	1165
I	995	916	1162
J	795	916	1162

Please note: All pits designed and constructed using steel bar and mesh reinforcement with 40Mpa concrete to ensure integrity and strength of construction as required in rail and mining installations.

Access cover options include GMS hinged locking as shown, full SCEC security locking cover options, or cast iron covers in concrete roof encasements in Class B, C or D load ratings.

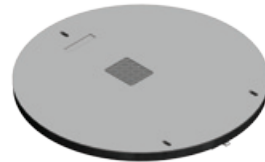
Plastic Rail Pits (continued)



Service Pit Gal Locking Cover
Product Code 124116

Service Pit (STD)
Product Code 124115

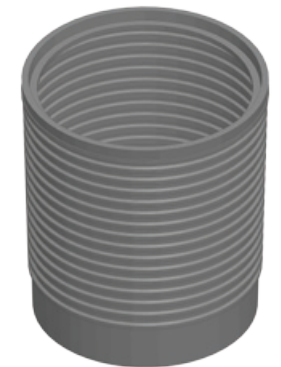
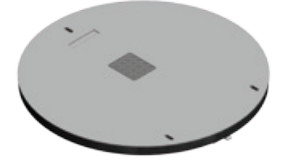
Service Pit Large
Product Code 124117



1050 dia Secure Cover
Product Code 321090 (locking lid)
Product Code 321100 (non-locking lid)

1050 dia Secure Ring
Product Code 323100

Pit -1050 diam HD x 500
Product Code 124121S



1050 dia Secure Cover
Product Code 321090 (locking lid)
Product Code 321100 (non-locking lid)

1050 dia Secure Ring
Product Code 323100

Pit - 1050 diam HD 1200
Product Code 124121

Product Code (pit only)	124115	124117	124121S	124121
Pit Dimensions	dia 500 x 600	dia 500 x 830	1050 x 500	1050 x 1200
Diameter (Clear Opening)	480	480	975	975
Depth (Internal)	535	837	493	1170

General Cable Duct and Plastic Cable Pits

Rail/Mining

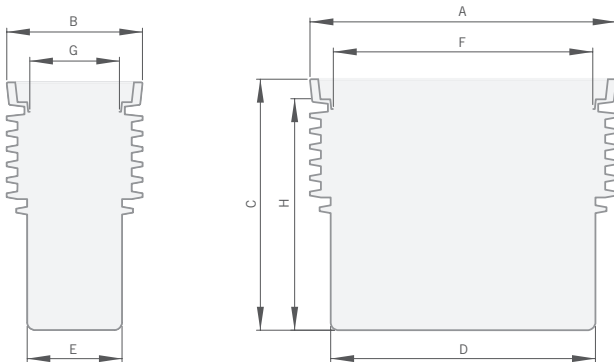
Concrete Cable Duct

Product Code	Product	Length	Width	Lid Underside
521435	Cable Duct Invert.	1220	400	160
521440	Cable Duct Lid	1220	345	(45mm Thick)



Concrete Cable Duct and Cover
Product Code 521430

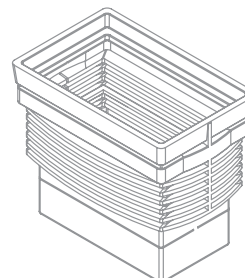
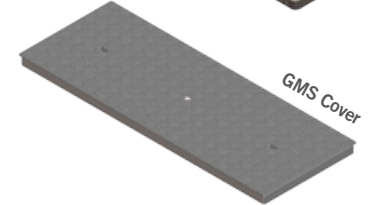
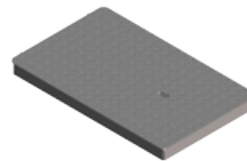
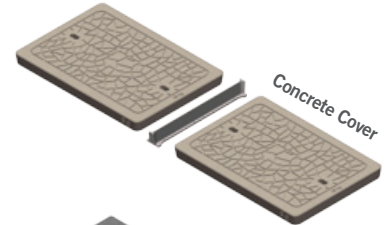
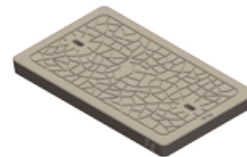
Plastic Rail Pits



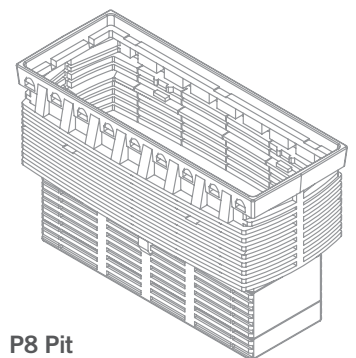
A x B x C x D x E - Overall Dimensions

F x G x H - Clear Opening Size

Product Code	124030	124045
	P5 Dimensions	P8 Dimensions
A	700	1364
B	450	610
C	605	880
D	570	1200
E	320	410
F	580	1241
G	330	431
H	549	820



P5 Pit
Product Code 124030



P8 Pit
Product Code 124045

Please note: All Standard Plastic Cable Pits sizes from P1 - P8 available including special locking covers to order. Plastic riser extensions available for P5 and P6/8 Pits.

Contacts]

Victoria

73 Carngham Road
Ballarat West, VIC 3351

T: 03 5335 8741
F: 03 5336 1118
E: info@bvci.com.au

Queensland

32 Macbarry Place
Rocklea, QLD 4106

T: 07 3717 8444
F: 07 3717 8445
E: info@bvci.com.au

New South Wales

8 Cavasinni Place
Wetherill Park, NSW 2164

T: 1800 065 356
F: 03 5336 1118
E: info@bvci.com.au

www.bvci.com.au